

(Subject to change - fires still burning)

Kimiwan Complex, Alta, Started May 5th, 2023

compiled by Jalena Bennett, 21 Aug 2023

Fire Info

Details:

(provided by <https://www.arcgis.com/apps/dashboards/3ffcc2d0ef3e4e0999b0cf8b636defa3> and <https://srd.web.alberta.ca/wildfires-of-note>)

- Fire numbers: PWF-038, SWF-068

	PWF-038	SWF-068
Location	approx. 17 km northeast of Three Creeks and 20 km southwest of Simon Lake	approx. 6 km northwest of the Peavine Metis Settlement
Start Time	May 5 2023 @ 4:24 pm MT	May 5 2023 @ 6:12 am MT
Traditional Territory	Woodland Cree	Near Peavine Metis settlement, Kapawe'no First Nation, William Mackenzie 151k, and Whitefish lake
Suspected Cause	Under Investigation as of 2023-08-21	Lightning
Current status	Under control since June 2 2023. Held at 6,533 hectares.	Out of control from 2023-05-05 to 2023-07-27 Being held (2023-07-27) <ul style="list-style-type: none">- Being held (BH) status on the tails of a low pressure system bringing rainfall into the area for several days. Held at 143,039 hectares. Under control as of Aug 11, 2023 <ul style="list-style-type: none">- Under control (UC) status on the tails of wet conditions in the area.

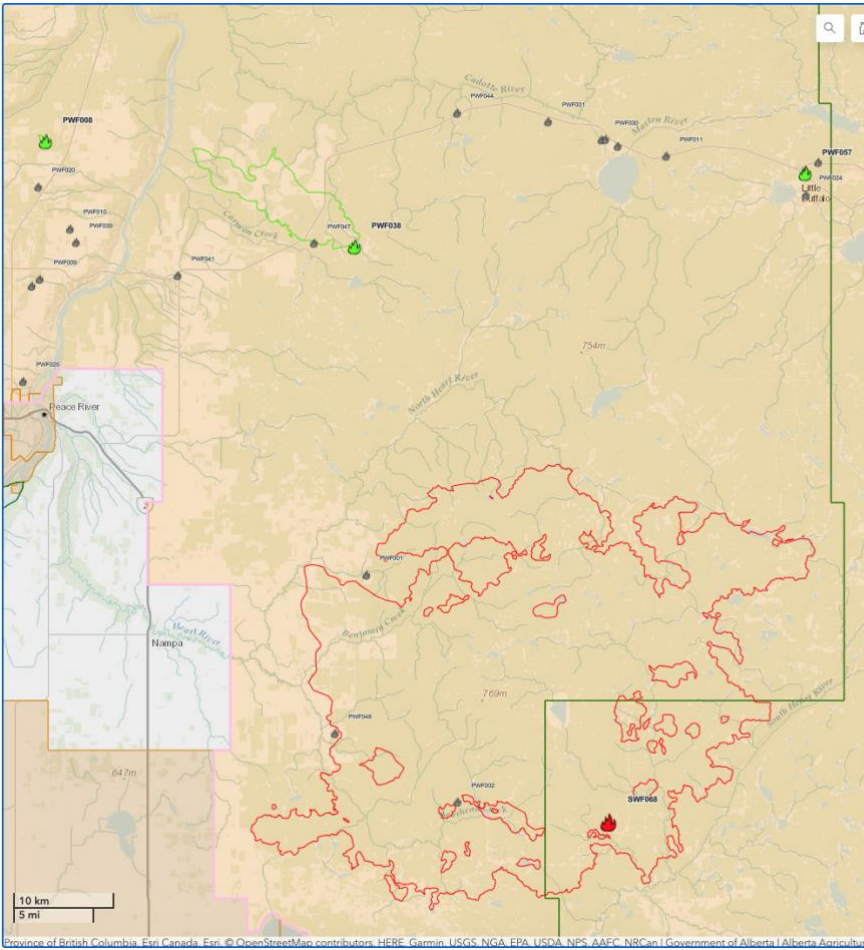
Contributing Conditions

- Extra-tropical cyclone helped the fire spread
- Dry conditions and hot weather
- Spring dip

No videos found online (Aug 21, 2023)

Media photos and video

Image/Video



Caption and Source

Kimiwan Complex on June 15th, 2023. Both fires are visible in image, with SWF-068 outlined in red and PWF-038 outlined in green

Source:

<https://www.arcgis.com/apps/dashboards/3fcc2d0ef3e4e0999b0cf8b636defa3>



"Wed. May 31st the Kimiwan Complex transferred command to an Australian Type 1 Team. "It was a great assignment and I am proud to lead this dedicated group" said the Incident Commander. Today, international debriefings start and the California team will return home by June 3rd."
- UFSF Fire-California on twitter

Source for next 2 photos:
https://twitter.com/R5_Fire_News/status/1664413068686925826

Photo of smoke rising from one of two fires in the kimiwan complex



Photo of the base that was used by fire suppression personnel.



"A Type 1 California Incident Management Team arrived in Canada to help aid in fire suppression efforts. The 15 team members include employees from USFS in Region 5, @BLMca employees, and is supplemented by the Alberta government fire personnel."
- UFSF Fire-California on twitter

Source:

https://twitter.com/R5_Fire_News/status/1661887801762418688



The Kimiwan Complex Fire SWF068 is classified as Out of Control (OC). The current fire size is 132,581 ha. (june 14th, 2023)

Caption:

An Australian flag flies over Kimiwan Complex's firefighters' tents. An Australian Incident Management Team is managing the Kimiwan wildfire.

The Incident management team (IMT) is supported by firefighters from Canada, Australia and America.

Source:

<https://srd.web.alberta.ca/peace-river-area-update/peacriver-update-may29-2023-0-0-1-0-0-0-0-0-0-0-0-0-0-0-1-0-0-0>



California National Forests on Facebook

"Wednesday, May 31st the Kimiwan Complex transferred command to an Australian Type 1 Team."

Source:

https://www.facebook.com/photo/?fbid=269611452249328&set=pcb.269614102249063&locale=br_FR



California National Forests on Facebook

"Incident Commander Dustan Mueller and his team took command of the 'Kimiwan Complex' fire in the Peace River Forest area of Alberta, Canada on Friday, May 19th. The current size of the fire is 119,985 hectares (approximately 296,489 acres) and has 40% containment."

Source:

https://www.facebook.com/photo?fbid=265732525970554&set=pcb.265732602637213&locale=br_FR



The Kimiwan Complex Fire SWF068 is classified as Out of Control (OC). The current fire size is 132,581 ha (june 15th, 2023).

Caption:
Australian, U.S., and Yukon firefighters action the perimeter of SWF068.

Fire behaviour on the Kimiwan Complex is expected to be moderate today. The Kimiwan Complex fires are currently stationary due to the current weather conditions. The excursions in the northwestern section of the fire have a guard line around it, however the fire is still active. There are 280 firefighters from Canada, Australia and America continue to work to secure guard lines around the fire, mop up and put out hotspots, supported by 20 heavy helicopter machines and nine helicopters.

Source:
<https://srd.web.alberta.ca/peace-river-area-update/peaceriver-update-may29-2023-0-0-1-0-0-0-0-0-0-0-0-0-0-0-0-1-0-0-0-0>



From the Peace River Area Update on June 11th, 2023

Caption:
Firefighters patrolling SWF068.

Source:
<https://srd.web.alberta.ca/peace-river-area-update/peaceriver-update-may29-2023-0-0-1-0-0-0-0-0-0-0-0-0-0-0-0-1-0>



The Kimiwan Complex Fire SWF068 is classified as Out of Control (OC). The current fire size is 126,196 ha. (June 9, 2023)

Caption:

Firefighters observe ignition operations June 8. Alberta Wildfire uses operational ignition (both aerial and ground) to help wildfire operations. Ignition (indirect attack) can be used to move the fire to more advantageous places to fight the fire, to make conditions on the ground safer for ground resources by removing unpredictable fuel types or moving the fire off a steep slope to a safer area to work. This is a very effective way to remove unburnt fuels between the fire and perimeter control lines.

Firefighters assisted by heavy machinery and aircraft are continuing with planned ignition operations, which began yesterday north of Seal lake Road and west of Baytex Road, with the objective of preparing strong containment lines ahead of extreme fire behaviour forecast for the next several days.

Source:

<https://srd.web.alberta.ca/peace-river-area-update/peaceriver-update-may29-2023-0-0-1-0-0-0-0-0-0-0-0-0>