



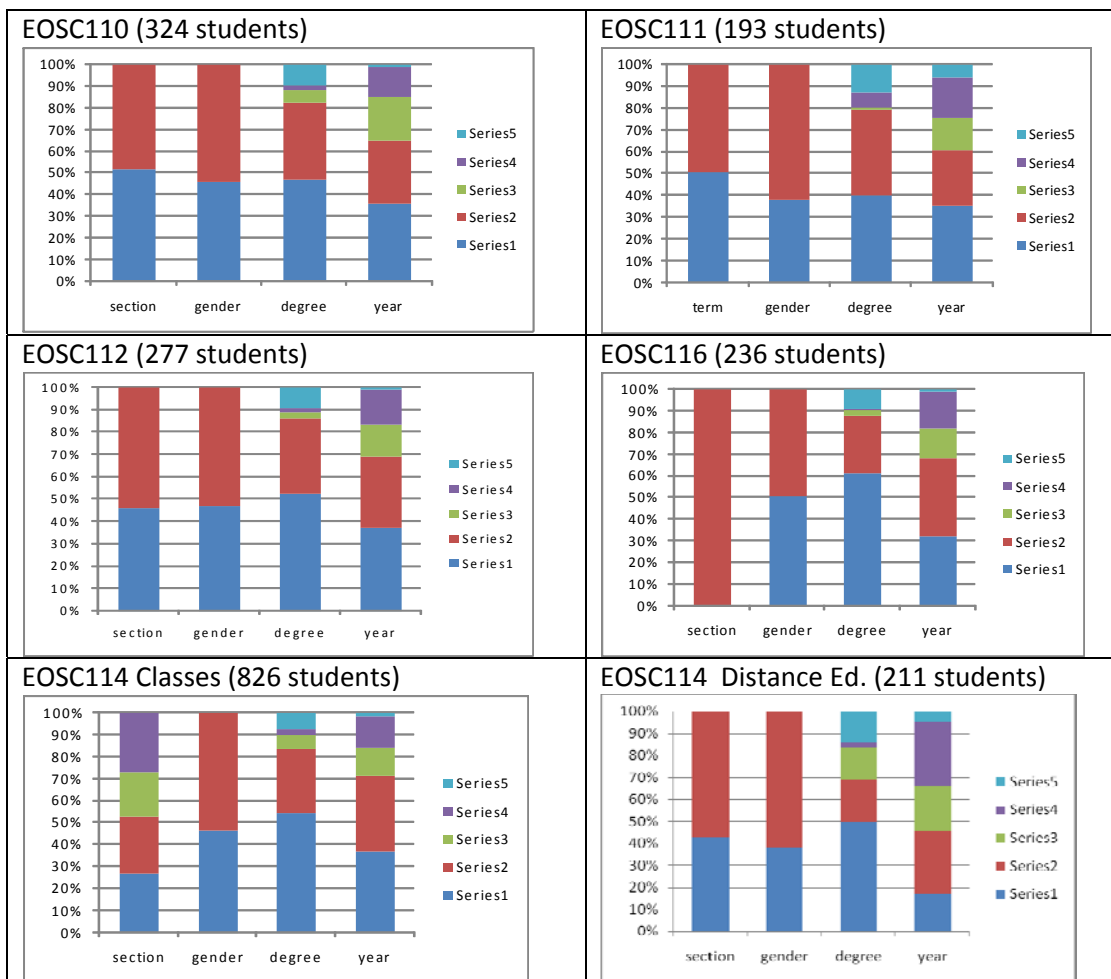
## Summary of demographics in EOSC1xx courses, for two terms W2006 only.

Data have been gathered into file eossei\projects\curriculum\demographics\1xx-demogs-2006w.xlsx

This information does NOT account for students taking several 1xx courses in different years.

Graphs are read using legend as follows:

| Column  | Series 1 | Series 2          | Series 3      | Series 4      | Series 5 |
|---------|----------|-------------------|---------------|---------------|----------|
| Section | 101      | 201 (102 for 114) | (201 for 114) | (202 for 114) |          |
| Gender  | male     | Female            |               |               |          |
| Degree  | BA       | BSC               | BCOM          | EXCH+UNLC     | OTHER    |
| Year    | 1        | 2                 | 3             | 4             | other    |



### Comments:

Sections: Little preference for sections.

Gender: is balanced **except** in eos111. Many plan on Bed.

Degree: consistent in all courses **except** more BCOM in 114DE. Educ'n is declared after a BA.

Year: consistent in courses **except** more 4<sup>th</sup> yr and fewer 1<sup>st</sup> yr in 114DE. (Might reflect on effectiveness of online pedagogy).

|                     |             |
|---------------------|-------------|
| <b>Total</b>        | <b>2067</b> |
| <b>Taking 2</b>     | <b>316</b>  |
| <b>Taking 3</b>     | <b>39</b>   |
| <b>Unique stu's</b> | <b>1751</b> |

| This + another |     | totals in | percent |
|----------------|-----|-----------|---------|
| <b>110</b>     | 110 | 324       | 34.0%   |
| <b>112</b>     | 91  | 277       | 32.9%   |
| <b>114</b>     | 211 | 1038      | 20.3%   |
| <b>116</b>     | 78  | 236       | 33.1%   |
| <b>111</b>     | 140 | 193       | 72.5%   |

### Taking 2 or more this year:

For example, 73% students in eos111 are also taking another eos1xx course this year.