

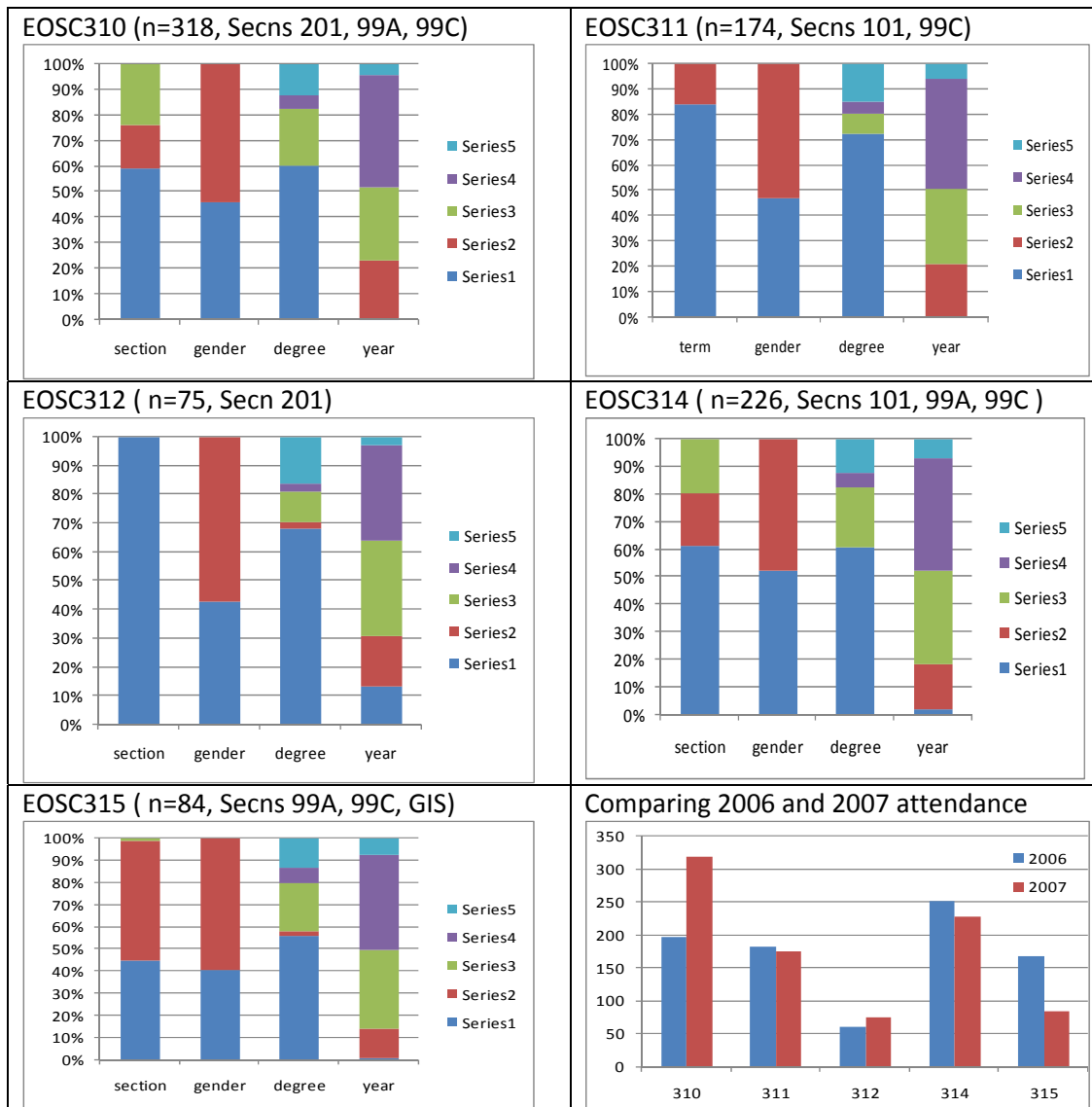


Summary of demographics in EOOSC31x courses, for two terms W2007 only.

Classroom and distance ed versions are combined.

Graphs are read using legend as follows:

Column	Series 1	Series 2	Series 3	Series 4	Series 5
Section	See captions				
Gender	Male	Female			
Degree	BA	BSC	BCOM	EXCH+UNLC	OTHER
Year	1	2	3	4	other



Comments:

Sections:

Gender: Usually more girls than guys (due to education majors?).

Degree: pretty similar.

Year: consistent except for 10^{1st} yr students in eosc312.

Totals 2006:
310+311: 378.
314+315: 417.

Totals 2007:
310+311: 492.
314+315: 310.

Took both:
310 & 311; 34